

BIENNIAL REPORT

2015
2016



**Integrated
Development
Society Nepal**

Copyright © 2017 All Rights Reserved.

IDS Nepal would appreciate receiving a copy of any material that uses this publication as a source.

No use of this publication may be for any other commercial purpose whatsoever without prior permission in writing from IDS Nepal.

Editorial Team	Kamal Raj Gosai, Dikshya Devkota, Anjan Kumar Phojju, Hardik Adhikary, Prabha Pokhrel, Prakash Koirala
Design/Layout/Print	DigiScan Pre-press Pvt. Ltd.
Photos	IDS Nepal photo bank and field staffs
Published by	IDS Nepal

BIENNIAL REPORT

2015
2016



**Integrated
Development
Society Nepal**

MESSAGES

CHAIRPERSON



Prof Dr Rajendra Prasad Adhikari

It is a pleasure for us to bring out our biennial report 2015-16, which gives brief overview of our activities and efforts. IDS-Nepal has been continuously working to make it visible in the process of socio-economic transformation of Nepalese community through its dedicated and meaningful participation in various income generating activities including awareness building and social inclusion. Our efforts to create open defecation-free (ODF) areas, steps towards Total Sanitation Zones have continued to support the ultimate goal of Government of Nepal to create healthy communities.

I hope this report will inform the readers about our works and IDS-Nepal's role in the society.

Finally, I would like to acknowledge Government of Nepal through its line ministries, Social Welfare Council, donors, partners, staffs of IDS Nepal at the centre and in the districts for their untiring effort for bringing real transformation in lives of Nepali people.

FOUNDER
CHAIRPERSON

Ms Prabha Pokhrel

Nepal, slowly reviving from two decades of political instability and a major earthquake in 2015 still has many challenges in graduating to *Developing Country* by 2022. To Build Back Better, IDS Nepal's strategy is adoptive and transformational as its philosophical norm of adopting appropriate approaches have delivered best outcomes since inception. The institution has prominently shown its efficiency in facilitating economically affordable, socio-culturally viable and naturally sustainable development.

The institution has climbed several stairs of success, gained firsthand knowledge and applied it for community welfare and policy advocacy. I hope as in the past, communities will compliment us in implementation of tasks, development partners will support us and IDS Nepal team will continuously contribute and dedicate themselves in transforming it into a sustainable and leading NGO. Assimilating the acquired credibility, I will facilitate leadership in contributing to the nation's prosperity and look forwards to a stronger, independent, sustainable, renowned and leading IDS Nepal in future.

QUICK FINDS

IDS-N at a Glance	5
Sectors in Brief	6
2015 Earthquake	9
IDS in Numbers	10
Milestones	12
Project Portfolio	14
Achievements and Impacts	16
Case Studies	18
Financial Statement	21
Publications	24

EXECUTIVE
DIRECTOR

Mr Prakash Koirala

In its successful sixteenth years, from inception until now, IDS Nepal has come a long way and still has miles to go. In all these years, the organisation has undertaken various projects, positively impacting and changing many lives all over Nepal, since we have already reached 45 districts. This report showcases our activities and achievements of the years 2015 and 2016. In these two years, IDS has also undertaken several international projects; I am positive this will open many doors for us in the future. Likewise, we have also formed new national partnerships, which will inevitably support us in touching more lives. The continuous advancement of IDS Nepal has only been possible with the hard work and dedication of field level and central office staff, all of whom I would like to acknowledge as well as our partners and clients. In the years to come, IDS will continue to undertake many assignments and spread our helping hands all over Nepal and beyond.

VISION

To improve the quality of life

MISSION

To assist sustainable and equitable development of community infrastructure and improvement of livelihoods

IDS-N AT A GLANCE



Students practising handwashing at Darchula

TO CONQUER ITS VISION, IDS NEPAL'S FUNCTIONING APPROACHES ARE

- COMMUNITY-ORIENTED PARTICIPATORY APPROACHES
- PEOPLE PARTNERSHIPS THROUGH COMMUNITY BASED ORGANIZATIONS (CBOS)
- SUBSTANTIAL BUT PROPER UTILIZATION OF LOCALLY AVAILABLE RESOURCES
- IMPLEMENTATION OF INTERDISCIPLINARY PROGRAMS
- GENDER AND SOCIALLY INCLUSIVE HUMAN RESOURCES DEVELOPMENT AND INVOLVEMENT
- AFFORDABLE, VIABLE AND SUSTAINABLE LIVELIHOOD APPROACHES

**SUSTAINABLE DEVELOPMENT,
POLICY AND ACTION RESEARCH**

KNOWLEDGE MANAGEMENT

**INFRASTRUCTURE DEVELOPMENT
(WATER AND SANITATION)**

**CLIMATE CHANGE AND
RENEWABLE ENERGY**

**SOCIAL DEVELOPMENT,
GENDER AND INCLUSION**

KEY WORKING SECTORS



IDS-Nepal

**Integrated
Development
Society Nepal**

Irrigation channel constructed in Kalikot



Construction of check dam in Kalikot



Integrated Development Society – Nepal (IDS Nepal) is a leading non-profit, non-governmental development organization that strives for sustainable development, social inclusion and equity. In the span of just 16 years, IDS has become an independent think tank on development issues, aside from implementing more than 100 projects across Nepal since its inception in 2000.

We focus on building capacities and strengthening infrastructures in destitute communities, enabling them to take ownership of their development through self-help mechanisms by binding empirical policy research and advice, programme development, and project implementation in the field. We value capacity building and inclusive ownership from stakeholders throughout development processes which ensures sustainability of the initiation.

To achieve our main objective of uplifting lives of disadvantaged, marginalised and underprivileged people we intervene by conceptualizing, formulating and facilitating implementation of community managed development projects through their active participation in all steps of project cycle. We encompass people in mainstream of development to generate self-resilient livelihood through enhancement of prosperity, decreasing disparities, poverty and vulnerabilities especially targeting poor and marginalized, deprived and disadvantaged, and socio-economically diffident and geographically challenged people in rural as well as in semi-urban and urban areas.

We build alliance with national and international partners whose goals compliment our aspirations.

SECTORS IN BRIEF

Climate Change and Renewable Energy

Being a least developed country with variability in natural and spatial phenomenon, Nepal has been hard hit by changing climate due to our inefficiency in adaptation and acclimatization. Among various facets of climate change and its potential implications, in the past two years we have focused on generating relevant evidences, energy issues and ecosystem based adaptation measures. Declaration of Markhu VDC of Accham smoke-free area due to extensive use of Improved Cooking Stoves is one of our main achievement. Development of "TAMD and Toolbox" for assessing loss and damage are two of our pilot projects in risks evaluation which can be easily replicated in other areas. Besides, IDS Nepal has also carried out many projects in forest management with MSFP which has not only protected and enhanced forests but has enhanced livelihood of the community people.

Infrastructure Development (Water and Sanitation)

To address various water and sanitation issues IDS Nepal has been playing a key role in community based infrastructural development programmes. The organisation has gone hand in hand with schools for construction of toilets that are child friendly and water tank for management of fresh drinking water. Such efforts and campaigns have resulted in Bardiya as the first Open Defecation Free (ODF) in Terai Region. Through different projects, IDS has conducted various WASH activities such as, planning, designing, constructing drinking water supply schemes, sanitation structures formation, institutionalization, capacity enhancement of CBOs, IEC material development, sensitization, trainings, triggering and establishment of numerous relevant clubs. We have always involved two aspects in such assignments –tangible (buildings and infrastructures) and intangible (support, concept mechanism, capacity building, communication dissemination for durability and carrying capacity).

Knowledge Management

IDS-Nepal has been a source of knowledge for not only subjugated communities, educationally deprived people, and unskilled human resource and intellectuals & academicians for increased capacity, acquiring skills, as well as tackling issues through the medium of seminars, capacity building and skill development trainings, workshops and public hearings. Our knowledge management is also useful in informing policy makers about current environmental status of Nepal developing & devising tools for evidence generation and other research findings. The sector has not only made the communities adept in enhancing their living standard, but also has paved a way for IDS-Nepal to observe direct output of better knowledge access and practical application. Knowledge generation and its dissemination helped rural communities and has provided ample support to scientist, researches and policy makers as well. Through numerous reports and guidelines, we have bridged gaps between communities and policy making authorities facilitating proper exchange of information on their status and need and vice versa. The sector of knowledge management has been broadened from just community development to sustainable community development, just protection of forest to proper management of forest and resources, just knowledge of climate with adaptation mechanisms and the like. IDS-Nepal has taken a step to manage such knowledge in diplomatic way that leads to policy formation, proper researches, development strategies and implementing procedures.

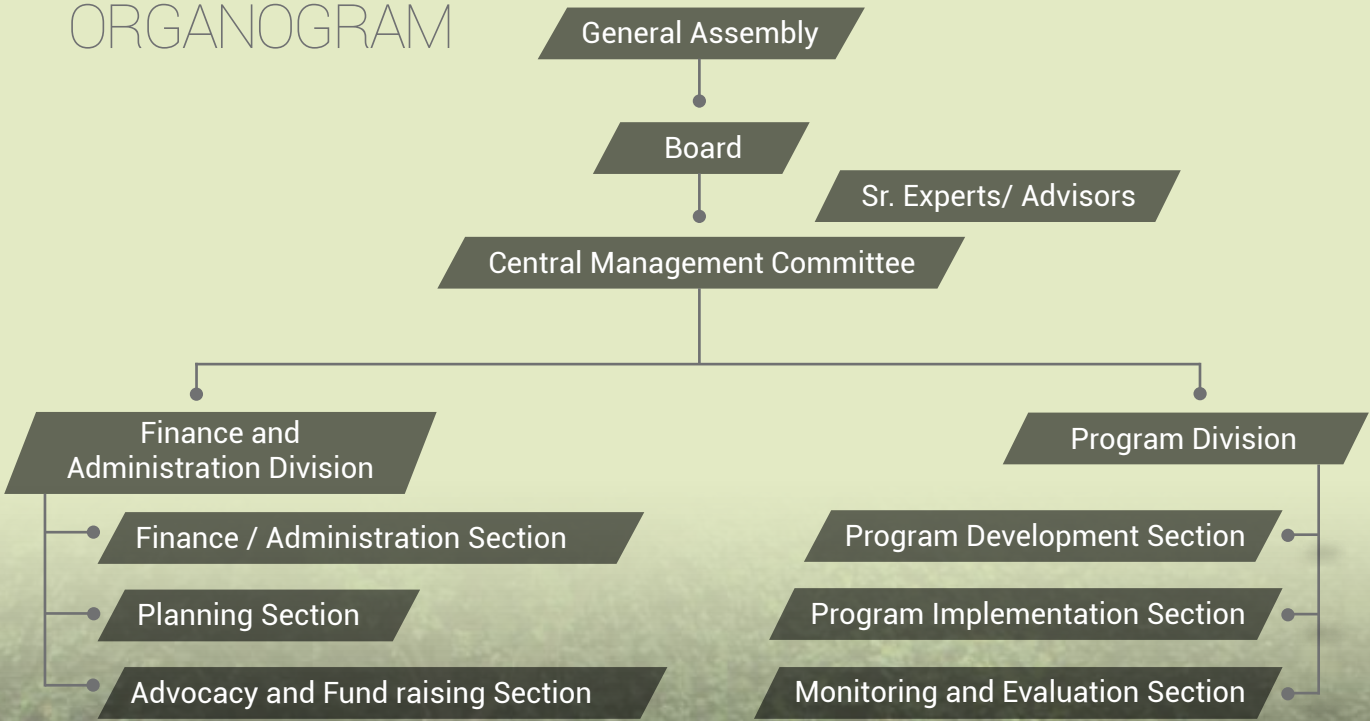
Social Development, Gender and Inclusion

IDS-Nepal believes in equity based development procedures ensuring participation of all stakeholders regardless of gender, caste or creed. To maximize efforts and achieve optimum benefit from our projects, we have accomplished various activities focused on enhancement of social development, heightened self-esteem, social relation, empowerment and increased accessibility to disadvantaged and marginalised people in mainstream of development. For increased accessibility to goods, rights and services (female education, adult education, child rights, property rights, etc) IDS works in different aspects of the community. Consequently, such projects with gender and social inclusion have accomplished impressive outputs in changing the society and continue to do so in the future.

Sustainable Development, Policy and Action Research

IDS-Nepal focuses on innovative researches and adoptive methods relevant to current scenarios, short-term, mid-term and long-term periods. Such adoptive methods will mitigate variability and acclimatize with upcoming issues which is a major asset for future generation's sustainable development. Different feasibility studies, surveys and case studies have been conducted for policy recommendation in relevant sectors. IDS Nepal has been a trustworthy associate in output based researches, their analytical review and recommendation in policy formulation and implementation. IDS-Nepal considers numerous influencing aspects to custom design projects for community resilience to current and upcoming challenges.

ORGANOGRAM



Group Photo of board members, advisors and central office staff

BOARD

Prof Dr Rajendra Prasad Adhikari (Chairperson)
 Ms Prabha Pokhrel (Founder Chairperson)
 Ms Geeta Khadka (Vice- Chairperson)
 Mr Sombahadur Shrestha (General Secretary)
 Er Giridhar Mishra (Treasurer)
 Mr Gopal Krishna Shrestha (Member)
 Mr Sushil B. K. (Member)
 Ms Bijayalaxmi Shakya (Member)

ADVISORS

Dr Dinesh Chandra Devkota
 Dr Madhav Karki
 Prof Dr Madan Koirala
 Ms Pushpa Ghimire
 Ms Kalpana Pradhan

EXECUTIVE DIRECTOR

Mr Prakash Koirala



Distribution of relief materials immediately after the 2015 earthquake in Pangretar, Sindhupalchowk

Humanitarian Response: Mega Earthquake, 2015

A strong (7.8) earthquake hit Nepal on April 25, 2015 near Barpak, a mountainous village between the capital Kathmandu and tourist town Pokhara. Nearly 8000 people lost their lives and thousands of buildings and other infrastructures were ruined. This massive loss and damage of assets, infrastructures, shelters, livelihood and others needed immediate rescue and relief support. Hence, IDS-Nepal team spread its helping hand within a week of earthquake to 1013 households in Bhumichowk VDC of Gorkha, Pangretar VDC of Sindhupalchok, Sudal VDC of Bhaktapur and in Sankhu of Kathmandu district. The support package composed of food materials, first aid kit and shelter kit was enough for two week's survival. It also supported 940 HHs of Bhumlichowk, Gorkha with 2 bundles of (GI sheets each) to construct temporary shelter.



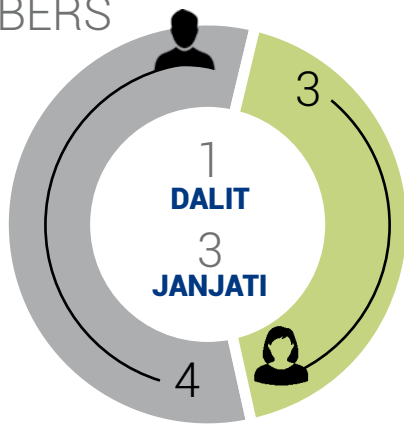
Earthquake victims of Bhumlichowk, Gorkha receiving CGI sheets in the aftermath of the earthquake

IDS IN NUMBERS

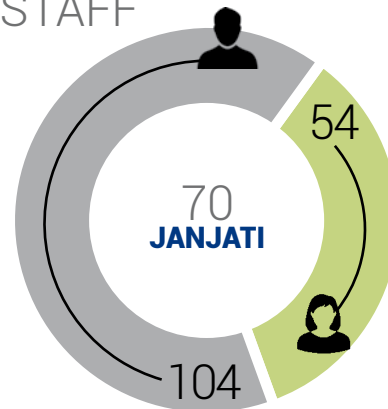
2000 AD

ESTABLISHED

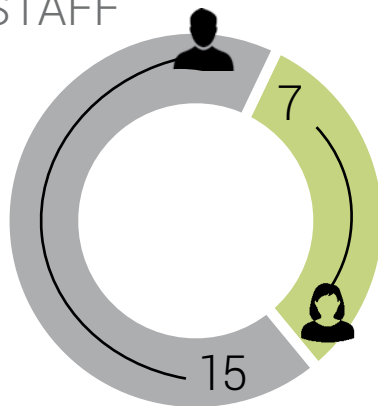
BOARD MEMBERS



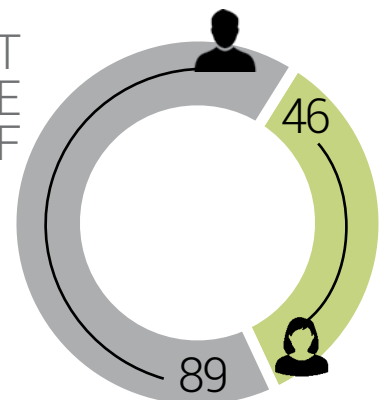
TOTAL STAFF



CENTRAL OFFICE STAFF



DISTRICT OFFICE STAFF



30 LAKH+

BENEFICIARIES

55

VDCS DECLARED
ODF ZONES

12

2015-2016
PROJECTS

102
COMPLETED
PROJECTS



9
ONGOING
PROJECTS

47
WORKED
DISTRICT AREAS

7,300
LATRINES
CONSTRUCTED



32
SURVEY STUDIES

80,000
INDIVIDUALS TRAINED

346
TUBE WELLS
CONSTRUCTED

1,060
SCHOOL SANITATION
PROGRAMS

190
IEC MATERIALS
PUBLISHED



41
RESOURCE PERSON



7,632
WATER QUALITY
TESTS DONE

976
PIPELINES INSTALLED

45
DRINKING
GRAVITY WATER
AND SANITATION
SCHEME

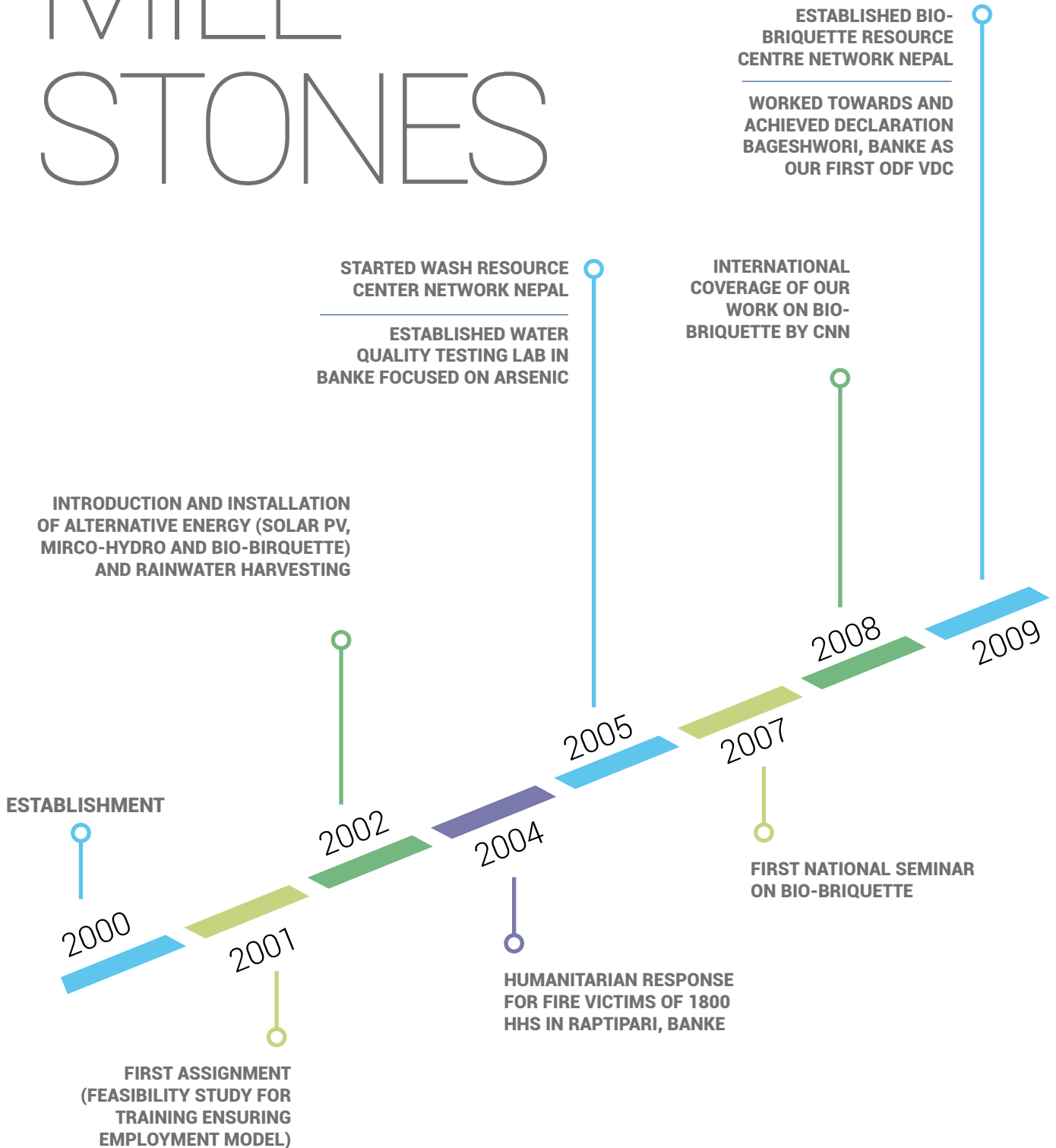
993
COMMUNITY BASED
ORGANISATIONS FORMED

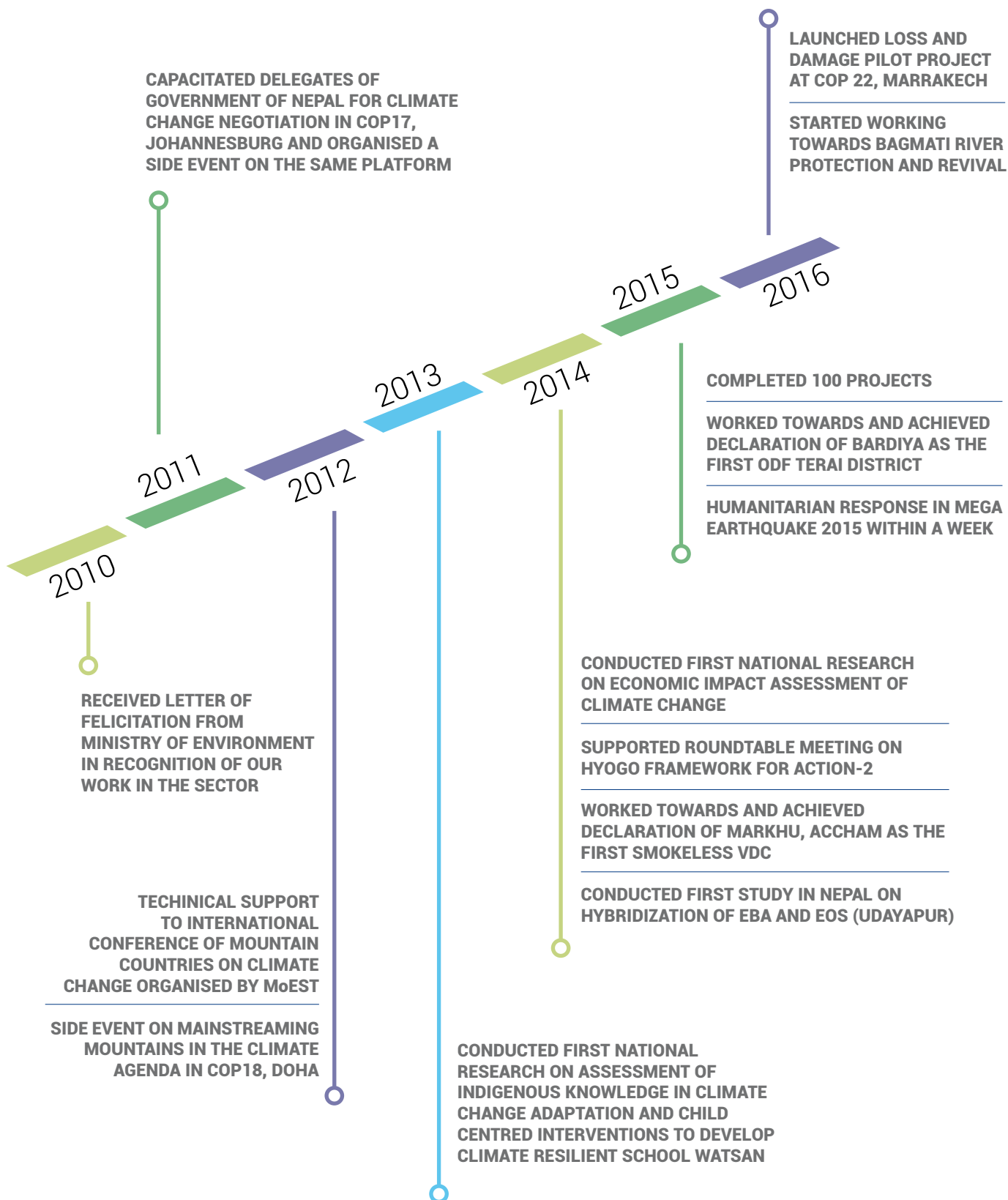
BARDIYA

1ST TERAI DISTRICT
TO BE DECLARED ODF

968
SANITATION
EVENT
CELEBRATED

MILE-STONES

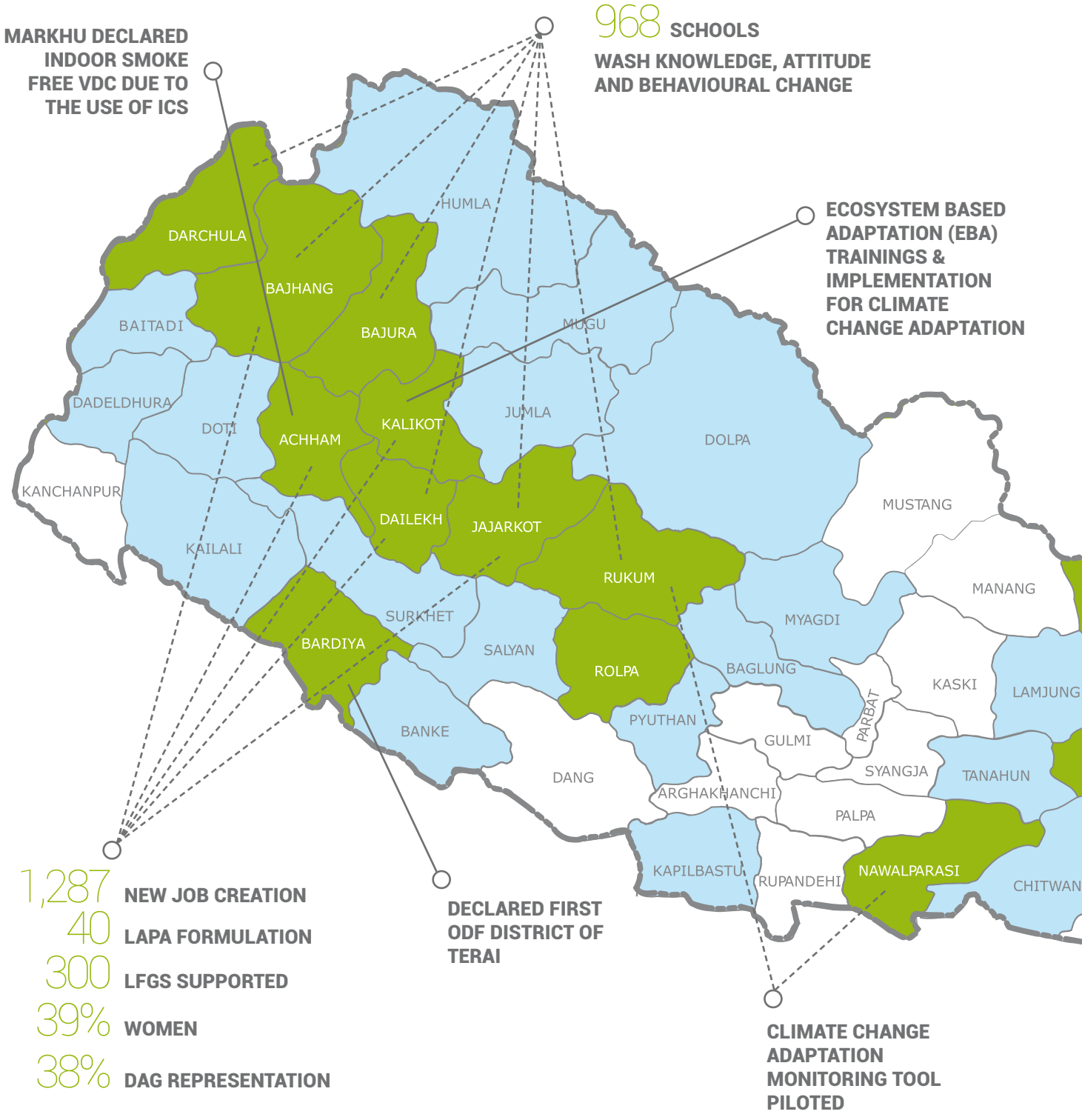




PROJECT PORTFOLIO

S.N.	Title of the Project	Intervention
1	Methods Toolbox for Assessing Loss and Damage at Local Level	Assessment of physical, psychological, spatial, social and economical impacts of Jure landslide
2	Improving Knowledge, Attitudes and Practices for Water, Sanitation and Hygiene (WASH) under the School Meals Program (SMP) Phase 1	Wash activities in 968 schools; 6 Kick off workshops; S-WASH-CC establishment; 120 trainings; Model school establishment
3	Service Organization (SO) for Implementation of WSS scheme in Khungri VDC Ward No. 2, 3 and 5, Rolpa District	Gravity water supply schemes construction; operation and maintenance fund collection; sanitation fund mobilization; women empowerment; school health promotion
4	Service Organization (SO) for Rural Water Supply and Sanitation Fund Development Board for Implementation phase (Batch-IX) in Rolpa District	Gravity water supply schemes construction; operation and maintenance fund collection; sanitation fund mobilization; women empowerment; school health promotion
5	Open Defecation Free Campaign in Bara District (ODF Bara) SGL – 33	Sector coordination and planning; School level capacity development for communication and monitoring ODF campaign
6	Greenery Promotion and Established Ecosystem Based Adaptation in Kalikot	Restoration of fragile Manma ecosystem and promote greenery; enhance local capacity; ecosystem adaptation measures; plantation
7	Support to Address Vulnerable Communities from Flood and Smoke Pollution in Accham District	Vulnerabilities mitigation measure identification and adaptation plan implementation; Smokeless VDC; Preparation of MAPA
8	Implementation of Multi Stakeholder Forestry Program	Increased investment and jobs; business partnerships; sustainable management of forests' benefits; local forestry groups plan implementation
9	Relief Efforts in Nepal	Assess the situation and provide instant material support for reconstruction to earthquake victims
10	Support to the 2015 Earthquake Victims of Kathmandu, Bhaktapur, Sindhupalchowk and Gorkha District of Nepal	Assess the situation and provide instant material support for reconstruction to the earthquake victims
11	Open Defecation Free Campaign and Sanitation and Hygiene Behavioural Promotion in Bardiya District SGL -19	Trigger people and increased awareness; strengthened institutional arrangement; built local capacity and ownership; empower community via collaborations
12	Tracking Adaption and Measuring Development (TAMD) Framework	Assessment of existing data to develop understanding of contextual vulnerability in potential areas; Developed vulnerability indicators, socio-economic indicators; analysis and linkages

Client	Location	Beneficiary
Lead Pakistan	Sindhupalchowk	
World Food Programme (WFP)	Rukum, Jajarkot, Dailekh, Bajura, Bajhang and Darchula	95,288 students, 14,520 S-WASH-CC, 72,600 locals; 912,040 indirect
Rural Water Supply Sanitation Fund Development Board (RWSSFDB)	Khungri VDC, Rolpa District	Male: 157; Female: 165; Dalit: 9/51; Indigenous: 2/16; others: 37/255
Rural Water Supply Sanitation Fund Development Board (RWSSFDB)	Danechaur, Upper Gumchal, Khadka tole, Kunjar and Jedwang/ Bhakare Khola	1084 Males; Female: 1170; Dalit: 45; Others: 313
Global Sanitation Fund (GSF)/ UN-HABITAT/ CHEA	Bara District	15 VDCs
Multi Stakeholders Forestry Programme (MSFP)	Kalikot (Manma VDC)	9,094 (Male: 4732 & Female: 4362)
Multi Stakeholders Forestry Programme (MSFP)	Accham (Markhu VDC and Safebagar Municipality)	18,239 (Male: 8291 & Female: 9948) - Safebagar; 2156 - Markhu
Multi Stakeholders Forestry Programme/ DFID, SDC, GoN, Finland	Bajhang, Achham, Kalikot, Dailekh, and Jajarkot	330,430 people
AIDMI and (JDC)	Bhumlichok VDC, Gorkha District	500 Households
All India Disaster Mitigation Institute (AIDMI)	Kathmandu, Bhaktapur, Sindhupalchowk, Gorkha	1,000 households
GSF/United Nations Centre for Human Settlements (UN-HABITAT)	Bardiya	426,576 people
International Institute for Environment and Development (IIED)	Rukum: Nuwakot & Shylapka VDC; Nawalparasi: Rampur Khadauna & Kolhuwa VDC	43,031 people



KEY IMPACTS AND ACHIEVEMENTS

2015-2016

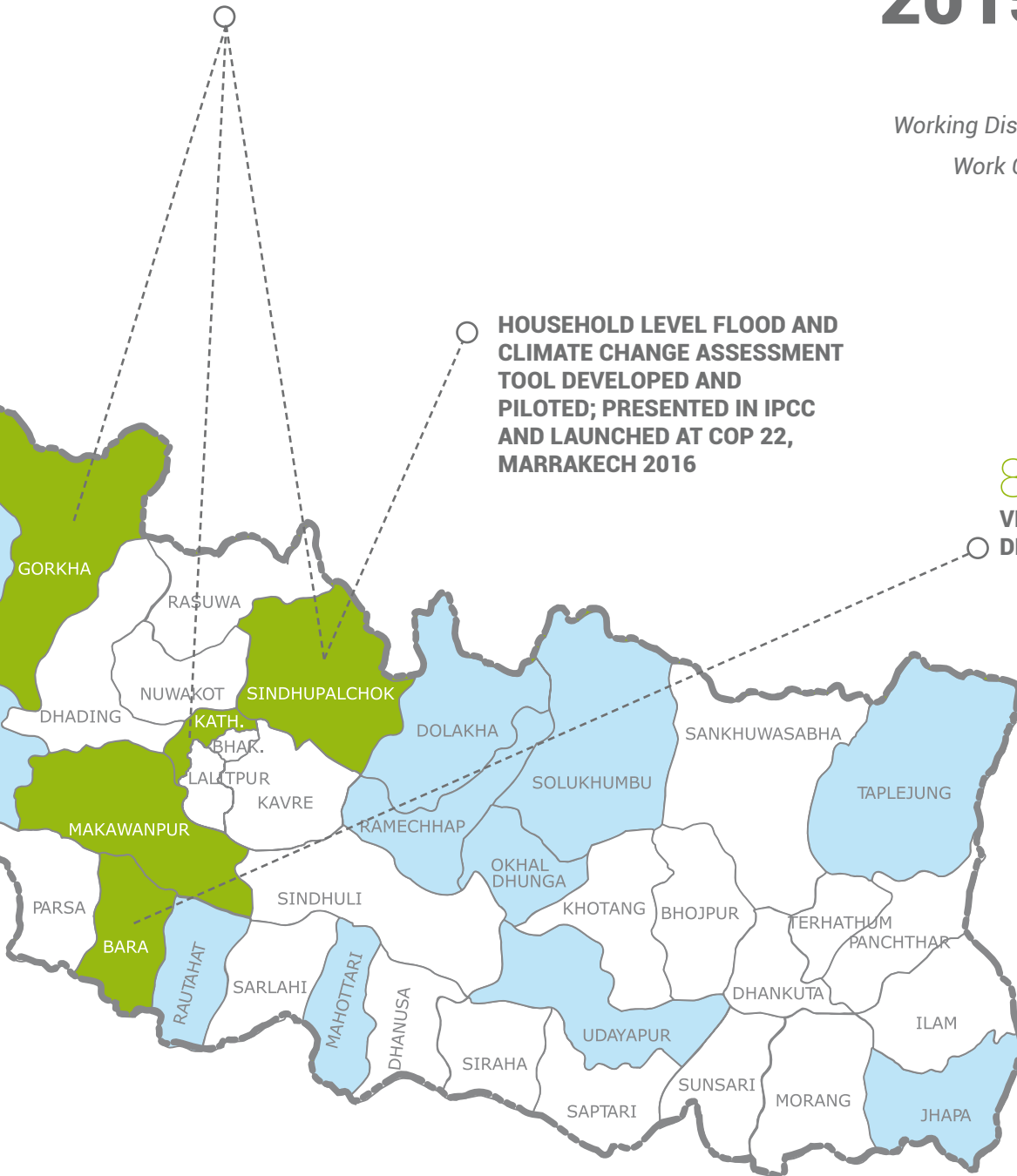
DISTRIBUTION OF IMMEDIATE RELIEF AND CGI SHEETS IN THE AFTERMATH OF 2015 EARTHQUAKE

Working Districts in 2015-2016

Work Completed Districts

HOUSEHOLD LEVEL FLOOD AND CLIMATE CHANGE ASSESSMENT TOOL DEVELOPED AND PILOTTED; PRESENTED IN IPCC AND LAUNCHED AT COP 22, MARRAKECH 2016

8 VDCS OUT OF 15 DECLARED ODF ZONE



CASE STUDIES

Beehive, the Way to Survive

'Pali' and 'Kalpat' in 'Dadagaun' VDC of Jajarkot district's community people used to export locally produced honey without proper marketing due to the prevalence of traditional system. Realizing its commercial potential, Multi-Stakeholders Forestry Programme (MSFP) initiated and was complimented by IDS Nepal for programs on various aspects of beekeeping to ensure effective outcomes of investment.

The foremost essential element of effective beekeeping is the hive thus, it was a must to replace the traditional ones. For its support 20 days Modern Beehive Manufacturing Training packages for 6 selected carpenters in Saubasa VDC was organized. After this, the wood artisans manufactured numerous hives, often customizing according to the customer's needs. Although Saubasa has only sold the beehives to local consumers, there has been ample orders to sustain their business.

A Beehive Manufacture Committee has also been established to monitor protocols through a contract between VDC and committee. The locals are working towards its enhancement hoping for prosperity. Hoping for professional enhancement, Ganesh B.K. (a local) said that the poor days were going to be of past as prosperity can be achieved due to the immense support of IDS lead by MSFP.



Skill enhancement of local carpenters in beehive making



Ms Kumhar with her toilet and two daughters

A Single Woman and her Toilet

Ms Parbati Kumhar, 38, of Mohamadpur-3, Lalpur, Badiya is a single mother with three daughters. Since there are many hardships in her life, toilet construction in her household was not considered a priority. While attending IDS Nepal's mass meeting, she shared that, although the discussion was eye-opening, she is not sure if she can construct a toilet but will try to save her daughter from diseases.

Interestingly, In our next visit to the village, we were pleasantly surprised to see a newly constructed permanent toilet at her house. She said, "I understood the importance of toilet and its utility as IDS-Nepal has worked as an eye-opener. Earlier, all of us used to go in open areas for defecation. So, to build this toilet I used my allowances which I got from the VDC as a '**single women allowance (social security allowance)**' and also managed some loan from neighborhood. Now I hope I'll be able to maintain sanitation and keep my children healthy."



Community women being taught hand washing techniques

Radio Jingle's Positive Impact

Musikot municipality-3 Bheri's resident, 46 year old Bhim Bahadur Bika has been positively impacted by World Food Programme and IDS Nepal's school WASH program related jingle through Sani Bheri FM.

He says, "I was listening to the radio while doing my chores when this jingle was played, the voice was very familiar. The jingle was about sanitation, I listened to it again and learned a lot about hygiene and understood that everywhere should be clean."

Mr Bika is a commercial farmer by profession. Although he was aware about hygiene and sanitation, he did not know everything about it.

He knew that, we should keep ourselves, children and household clean but after knowing that schools and other public areas should be kept clean, food should be eaten only after washing hands he is very glad. These days, he regularly turns on the radio around the time that the jingle is played, listens to it and makes others listen to it as well. He said that he has been sharing this message to his family and friends and his children have been more conscious about cleanliness as well.

He shares that, everyone should listen to the jingle and incorporate cleanliness and sanitation in our daily habit as it saves us from diseases, saves money and earns us respect.

MESSAGE FROM DIGNITARIES



Rajesh Prasad Singh
Program Director
Bagmati River Basin Improvement
Project (BRBIP)

We are very impressed with our recent collaboration with IDS Nepal due to their strong professional commitment and ample experience of the team members. Often effective public awareness and ownership creation are difficult however, IDS has already managed to do it easily with good message flow among the community thus, we are optimistic of impactful output as it goes, Well begun is half done. Beautification and management of river stretch is a new project and is visualized as a milestone. With visible and sustainable impact, it can be exemplary to other areas and organisations of the country. We have no regrets to have IDS as our extended arm in this project and are happy for many more partnership in the future.



World Food Programme Team (WFP)

Since early 2016, WFP is pleased to partner with IDS Nepal, an agency with 16 years of experience in the WASH sector. In line with the School Sector Development Plan (2016-2022) WFP's collaboration with IDS has focused on WASH in Schools as a key School Health and Nutrition intervention, specifically in linking it to School Meals Programmes. Direct programme support by engaging child clubs and social mobilizers has created a pathway to increase community awareness and importance of integrating hygienic practices into their daily lives. Since the project is in its early stage, concrete impacts are not visible however, we have observed increased attention to WASH in schools at the central level and the districts, where earlier WASH programme and campaigns were predominantly focused at the household level. We are confident that with shared common goals of advancing the Clean, Feed, Read, Learn approach, WASH activities in schools will continue to play a key role for Government of Nepal to achieve total sanitation as one of its Sustainable Development Goals.



Bhupendra Aryal
Executive Director
Rural Water Supply and Sanitation
Fund Development Board (RWSSFDB)

Rural Water Supply Sanitation Fund Development Board (RWSSFDB) and IDS Nepal have been in association for more than a decade now, and it has been an absolute pleasure. Our association had touched Far-Western and Mid-Western regions of Nepal and is now expanding to Central region. What makes IDS Nepal unique and efficient from other similar NGOs is its institutional and transparent approach with great teamwork including the experts. I can see huge potential in the organisation since it is heading in the right direction with visionary leadership. As we hold IDS Nepal in high regards, I hope for continuation of our partnership while the organisation evolves their competency in the future.



Shashi Ram Bika
Chairperson
Manpur Youth Society (MAYUS), Bardiya

Manapur Yuwa Samaj (MAYUS) is very happy with our first coordination with IDS Nepal. We have successfully achieved ODF declaration for first district of Terai with IDS Nepal team's effort and support at local level. Bardiya was stricken with diseases like diarrhoea and dysentery but now, after this ODF campaign, vast improvement are visible in hygiene and sanitation of the people here resulting in significantly less diseases and need of medication. Since we have achieved ODF status with the support of IDS Nepal we look forwards for partnership in post-ODF activities as well to better sanitation of surrounding environment, bridges and other buildings around.

Integrated Development Society (IDS Nepal)
Balwatar, Kathmandu

Balance Sheet
As at 31 Ashadh 2073 (15 July 2016)

(Amount in Rs.)

Description	Schedules	As at Ashadh 31, 2073	As at Ashadh 31, 2072
Fund & Liabilities			
Operating Fund	1	9,063,129.92	19,610,242.79
IDS Nepal		8,574,050.13	19,224,003.33
Poverty Aveliation Program (PAP)/PAF		4,253.28	4,253.28
Others		-	-
WSSP Barn		1,421,111.00	-
Consultancy Service SWM & SM NGO Package-3		-	-
Open Defeaction Free (ODF) Campaign Bardiya		(872,272.88)	(381,288.88)
Open Defeaction Free (ODF) Campaign Tikapur		-	15,018.00
Traking Adaptation & Measuring Development (TAMD)		(118,267.51)	369,963.37
School Wash Program		(951,979.90)	-
Loss & Damage Study (LEAD)		37,087.38	(19,823.26)
Multi Stakeholder Forestry Program (MSFP)		5,557.80	(5,418,985.35)
Enhancing Climate Resilient School WATSAN through Child Centered Interventions		(48,237.78)	(39,330.14)
Economic Analysis of Flood Related possible Ecosystem based Adaptations (EbAs) and Engineering Options (EOs)		-	8,428.05
Open Defeaction Free (ODF) Campaign BARA		869,605.26	961,045.17
Rural Water Supply & Sanitation Program (RWSSP)		66,790.00	393,206.01
Earthquake Relief Program (Relief Efforts In Nepal)		75,433.14	4,493,753.21
Capital Fund		4,068,878.02	6,789,362.56
Payables	2	13,320,928.67	10,101,816.25
Others		8,620,928.67	-
Consultancy Service SWM & SM NGO Package-3		4,700,000.00	-
Total		26,452,936.61	36,501,421.60
Properties & Assets			
Fixed Assets	3	4,133,453.02	6,789,362.56
Advance	4	7,168,170.48	7,538,760.88
Others		4,644,629.08	-
Consultancy Service SWM & SM NGO Package-3		2,523,541.40	-
Cash and Bank	5	15,151,313.11	22,173,298.15
Total		26,452,936.61	36,501,421.60

Significant accounting policies and notes to account

21

As per our report of 2016

Schedules referred to above form an integral part of the Financial Statements.


Jagannath Bhurtel
Finance Manager


Giridhar Mishra
Treasurer


Dr. Rajendra Pd. Adhikari
Chairperson


Prakash Gajrala
Executive Director


Jiwan Koirala Budhathoki
For & on behalf of
JKB & Associates
Chartered Accountants

Date: 25th September, 2016
Place: Kathmandu

Integrated Development Society
Balwatar, Kathmandu
Income and Expenditure Statement
For the Period 1 Srawan 2072 to 31 Ashad 2073 ()

Particulars	Schedules							
		IDS Nepal	Poverty Alleviation Programme (PAP)	Others	WSSP Bara	Consultancy Service SWM & SM NGO Package-3	ODF Campaign Bardiya	ODF Campaign Tikapur
INCOME								
Opening Balance of Operating Fund	8	19,224,003.33	4,233.28	-	-	-	-	15,018.00
Receipt During the period :	7	1,244,000.00	-	-	1,880,468.00	-	(381,288.88)	-
Fund Received from Poverty Alleviation Programme (PAP)/PAPF								
Fund Received from RWSSFDSP					1,880,468.00			
Fund Received from ODF Campaign Bardiya (SOL 19)								
Fund received from iED for Training Adaptation & Measuring Development (TAMD) program								
Fund Received PWCS for Economic Impact Assessment program (CDKN II)								
Fund Received from Leads Pakistan for Loss & Damage study								
Fund received from MSFP								
Fund received from WFP								
Fund received from UNDP for Enhancing Climate Resilient School WATSAN through Child Centered Interventions								
Fund received from ICIMOD for Economic Analysis of Flood Related possible Ecosystem based Adaptations (EbAs) and Engineering Options (EOs)								
Fund Received from UNHABITAT								
Fund received from RWSSFDSP for Rural Water Supply & Sanitation Program								
Fund receive for Earthquake Program								
Fund received from Institutional Development Fund								
Fund received from ODF Bardiya (SOL 5)								
Fund received from ADMJDC Local Donation		1,244,000.00						
Interest Income		858,566.74						
Transfer		1,219,750.18					(490,984.00)	(15,018.00)
Transfer to ODF Program, Tikapur								
Transfer from ODF Program, Tikapur								
Transfer to Core from ODF Program Bardiya SOL 5		900,000.00					(190,984.00)	(15,018.00)
Transfer from JDC to Core		200,000.00						
Transfer from L & D Program (LNU)								
Transfer from MSFP								
Transfer from Training Adaptation & Measuring Development (TAMD) program								
Transfer from ODF Bara to ODF Bardiya SOL 19								
Transfer from Core to L & D study program (LEAD)								
Transfer to Core from L & D Program (LNU)								
Transfer from Others to Core								
Transfer from Core to WATSAN								
Transfer to Core from EbAs And EOs		8,105.88						
Transfer from Core to MSFP								
Transfer of Interest		4,642.29						
Transfer to Core from Relief Program		500,000.00						
Overhead		1,216,429.64						
Service Charge								
Vehicle Rent								
Membership Fee		13,512.00						
Transfer from TAMD to Core		490,000.00						
Previous year Adjustment								
Script Sale		8,000.00						
Total Income		24,274,061.89	4,233.28	-	1,880,468.00	-	(872,272.88)	-
EXPENSES								
Programme Expenditures-IDS	8	15,700,011.76						
Programme Expenditures- PAP	9							
Programme Expenditures- ODF- Bardiya	10							
Programme Expenditures- Training Adaptation & Measuring Development (TAMD) program	11							
Programme Expenditures- School WASH Program	13							
Programme Expenditures- MSFP	12							
Programme Expenditures- WATSAN	14							
Programme Expenditures- EbAs And EOs	15							
Programme Expenditures- ODF BARA	16							
Programme Expenditures- Earthquake Relief program	19							
Programme Expenditures- Loss & Damage Study (LEAD)	18							
Programme Expenditures- WSSP Bara	20							
Programme Expenditures- RWSSP	17				459,557.00			
Total Expenses		15,700,011.76			459,557.00			
Surplus Fund Transferred to Operating Fund		8,574,050.13	4,233.28	-	1,421,111.00	-	(872,272.88)	-
Fund Balance Represented By:								
Fixed Assets		84,575.00						
Cash Balance								
Bank Balance	5	11,669,638.95	4,233.28		648,762.00		7,824.71	
Advance/ Receivables	4	2,297,105.40			1,300,000.00		8,000.80	
Loan- Payables	2	5,437,273.22			347,681.00		884,797.19	
Total Fund Balance		8,574,050.13	4,233.28	-	1,421,111.00	-	(872,272.88)	-

Significant accounting policies and notes to account

Schedules referred to above form an integral part of Financial Statements.

J. Shrestha
Jagannath Shrestha
Finance Manager

21

G. Mishra
Gundhar Mishra
Treasurer

R. Adhikari
Dr. Rajendra P. Adhikari
Chairperson

Date: 29th September, 2016
Place: Kathmandu

(IDS Nepal)

Statement
17 July 2015 - 15 July 2016)

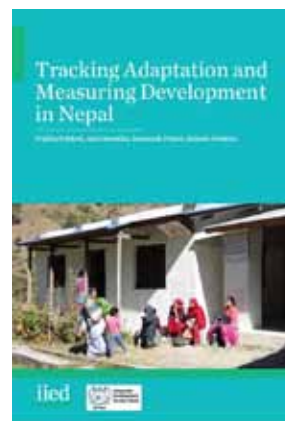
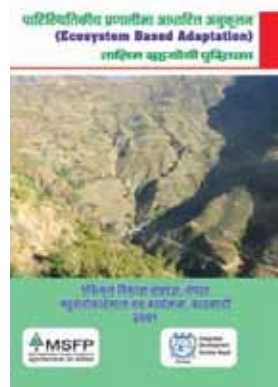
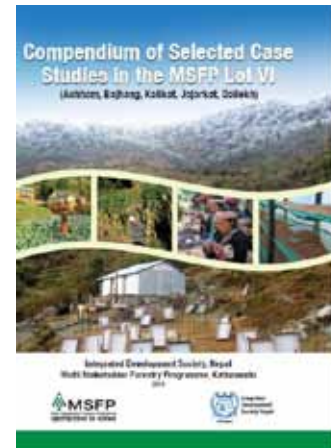
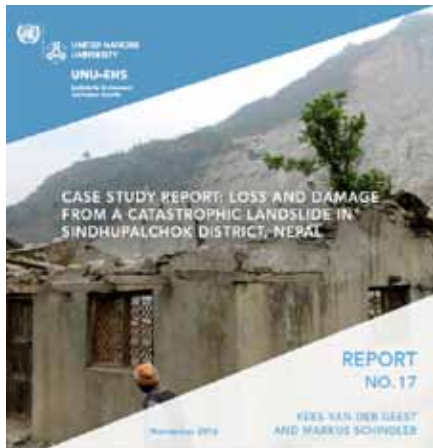
FY 2015/16										FY 2014/15
TAND	School WASH Program	Earthquake Relief Program	Loss & Damage (Lead Pakistan)	WATSAN	EbAs And EOs	ODF-BARA	RWSSP	MSFP	Total	Previous Year
383,963.37	2,697,555.60	4,493,753.21	(19,623.26)	(39,330.14)	8,428.05	361,045.17	393,206.01	(5,419,985.35)	19,610,242.79	49,580,120.41
-	-	5,812,250.00	302,913.05	-	-	2,581,463.25	553,149.63	24,805,278.59	39,877,078.12	39,671,709.15
-	-	-	-	-	-	-	-	-	1,820,468.00	-
-	2,697,555.60	-	302,913.05	-	-	-	-	24,805,278.59	24,805,278.59	-
-	-	-	-	-	-	2,581,463.25	-	-	2,581,463.25	-
-	-	-	-	-	-	-	553,149.63	-	553,149.63	-
-	-	5,812,250.00	-	-	-	-	-	-	5,812,250.00	-
-	-	-	-	-	-	-	-	-	1,244,000.00	-
1,789.12	-	21,789.88	577.59	5,424.41	677.84	34,894.16	1,812.98	7,950.29	833,243.01	734,307.88
-	-	(760,000.00)	-	(4,642.29)	(9,105.89)	-	-	-	0.00	-
-	-	(200,000.00)	-	-	-	-	-	-	-	-
-	-	-	-	-	-	-	-	-	-	-
-	-	-	-	-	-	-	-	-	-	-
-	-	-	-	-	(9,105.89)	-	-	-	-	-
-	-	-	-	16,542.29)	-	-	-	-	-	-
-	-	(500,000.00)	-	-	-	-	-	-	1,216,429.64	10,327,978.16
-	-	-	-	-	-	-	-	-	-	443,070.00
-	-	-	-	-	-	-	-	-	-	1,635,264.00
-	-	-	-	-	-	-	-	-	13,512.00	1,660.00
-	-	-	-	-	-	-	-	-	8,000.00	(16,324.11)
(116,267.51)	2,897,555.60	9,627,773.09	283,687.38	(38,548.02)	-	3,577,402.59	948,168.62	19,394,243.53	61,658,805.84	163,965,884.27
-	-	-	-	-	-	-	-	-	16,700,011.76	16,697,125.99
-	-	-	-	-	-	-	-	-	-	2,575,344.52
-	3,649,535.00	-	-	-	-	-	-	-	3,649,535.00	2,326,445.00
-	-	-	-	9,688.76	-	-	-	19,368,685.73	19,368,685.73	113,720,553.47
-	-	-	-	-	-	-	-	-	9,688.76	2,077,575.08
-	-	-	-	-	-	-	-	-	-	846,196.40
-	-	9,502,338.95	-	-	-	2,707,797.32	-	-	2,707,797.32	3,962,581.85
-	-	-	246,580.00	-	-	-	-	-	9,552,339.95	411,846.00
-	-	-	-	-	-	-	-	-	246,580.00	723,955.57
-	-	-	-	-	-	-	881,378.62	-	881,378.62	314,000.00
-	2,649,535.60	9,552,339.95	246,580.00	9,688.76	-	2,707,797.32	881,378.62	19,388,685.73	52,595,375.84	143,375,822.68
(116,267.51)	(951,979.90)	78,433.14	37,087.38	(48,237.78)	-	865,605.26	46,790.00	8,557.80	9,063,129.92	19,610,242.79
-	-	-	-	-	-	-	-	-	64,575.00	-
22,393.49	158,162.07	80,433.14	56,825.01	17,656.30	-	341,826.40	41,921.36	5,557.80	12,974,854.51	22,173,298.16
-	80,418.89	-	10,100.00	-	-	1,039,341.64	42,440.00	-	4,644,629.04	7,538,760.85
140,661.00	1,160,539.97	9,000.00	29,637.63	65,894.08	-	511,653.65	42,771.56	-	8,620,928.67	10,101,816.25
(116,267.51)	(951,979.90)	78,433.14	37,087.38	(48,237.78)	-	865,605.26	46,790.00	8,557.80	9,063,129.92	19,610,242.79
0.00	-	0.00	-	0.00	-	-	-	(0.00)	-	-

Prakash Koirala
Executive Director

Dillibazar Kathmandu
CA Jwan Koirala (Partner)
For & on behalf of
JKR & Associates
Chartered Accountants

As per our Report of Audit Date

PUBLICATIONS



PARTNER ORGANISATIONS



Asian Development Bank



ASHMITA NEPAL



IDS 2015-2016





GPO Box #6413
Baluwatar, Kathmandu, Nepal
Phone: +977 1 442 7329
Fax: +977 1 443 0225
Email: idsnepal@wlink.com.np
www.idsnepal.org

